

Vaune's July Newsletter

Please feel free to pass along to your friends!

July 2008

Summer is here, and the heat to go along with it. It is the 3rd of July and we just got back from our fireworks – yes, on the 3rd! Seems that when our town was first starting out, there was not much money to spend and fireworks on the 3rd were half price. It is now a tradition, with a big picnic at the park – wonderful for families! June seemed to fly by – it was so nice to see many of you in Arlington at the Martha's. I always look forward to seeing you all there! I saw Kerri Mecca with her new book – very cute! Summer seems to be flying by – and I have not done nearly enough sewing! Hope you are all able to enjoy some relaxing time with your families and yourself before summer is over! I will be teaching in Baltimore in a few weeks – hope to see some of you there!



As you may know, I love notions, and I have a few new ones for you this month! I found a great new magnetized pin caddy. I already have a little blue round one, but when I put my pins in there, they go every which way! When I pick up a pin or two, I end up poking myself. With this new pincushion, when you put (or throw, in my case) a pin back, the head always points to one of the 2 curved ends! No more pins poking out any which way! It also comes with a lid that snaps on, so if you have to travel, the pins stay put! It comes in pink/purple/green. Will do my best to honor color requests, but can't

guarantee it. Reg \$15.95, **July Special \$13.00**

A note about pins! Remember to use GLASS head pins, NOY pins with plastic heads! Plastic heads can be melted by an iron and you do not want melted plastic on your pretty fabrics! Look at your pins – use those with a fine shaft. Fat pins make fat homes in your fabric, which you also do not want! And remember an easy way to mark the right side of the fabric – white (glass head pins) is right and red (glass head pins) is wrong!



Here is another nifty notion, and has been a lifesaver for me! This fits onto your sewing machine (or any of a number of other places where it can come in handy) to give your eyes a bit of help (and the older my eyes get, the more help they need!). The light snaps into an adhesive bracket that you mount on your machine, or wherever you'd like it to go (extra mounting brackets are available for \$10, so you can use the lamp in more than one place). The lamp sheds 100,000

hours of white light wherever you need it most! 6 inch flexible arm and an 8 ft. cord (comes with clips to keep the cord out of the way). I love my Ott lamp, but it is bulky to use around my machine and I can't ever seem to get the light right at the foot of my machine. This lamp bends so the light

shines exactly where I need it to be. Reg. \$49.95

Special

\$45



Kerri Mecca's new book, Sewing with Whimsy, is chock full of new ideas to turn a basic pattern into a wow! dress. It is full of trims and embellishment ideas along with 3 patterns – a sundress, a puff sleeve dress, and a pinafore.

Reg. \$24.95, July special, **\$20**

*****Inspirations** info – one of the biggest distributors of “Inspirations “ embroidery magazine, from Country Bumpkin, will no longer be carrying them. If you are not able to get them anymore, let me know – I have another distributor who is still carrying them, so I will continue to stock them. If you want to be on my auto ship list for Inspirations or for “Australian Smocking & Embroidery”, just email me and let me know, and I will add you to my list.



New issue of **Australian Smocking & Embroidery, Issue 83**

The cover outfit is made out of a pink velour!

\$15.50

*****For all of you **Amanda Jane** girls! Finally, finally, finally, we have heard word that the pleater needles should be on their way any day! I myself have been out of AJ pleater needles for quite a while (since before Christmas), so this is WONDERFUL news for me! I have ordered a bunch – if you need them and are not already on my list, please let me know how many you want! I don't know for sure how many I will be able to get, and I hope to have enough for all! ****

Well, sad to say, we have past June 25 and the halfway mark to Christmas. Back when my kids were small (and I am not sure how, but I seemed to have more time then?), I would switch kids with a friend of mine and spend the day planning my Christmas sewing. For those of you that are starting to think along those lines, I have a few fabrics that you might like!

100 % Wool Challis – 54 inches wide. This is a wonderful fabric – nice and soft and pleats like butter, and I have found a great deal to pass along to you! This fabric usually retails for \$ \$38 / yard, and this month it is only

\$20 / yd I have it in Winter White, and a limited amount also in black, light Rose, and a lt purple. The Winter White is perfect for a Blessing or a Christening Coat. (Winter white doesn't scan well, so no picture)

Light Purple



Rose

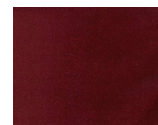
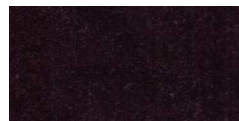


Black



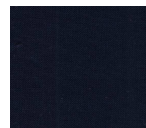
100% Cotton Velveteen 54" wide– This fabric runs upwards of \$30 and I usually carry it for \$14 / yard. This month' special –

\$10 / yd



Finally, I have a hard to find **Swiss Organdy in Navy!** It is 36" wide, Reg. \$28 / yd, this month it is on sale for

\$20.00 / yd



Our small but mighty smocking guild (4 members), 'Berry Good Smockers, has just finished our 8th Annual Stitching Serenity, in Santa Barbara, CA. Julia Golson was our teacher this year – she is a wonderful teacher and does beautiful embroidery! I have known Julia for many years, and have gone to Madeira twice with her. The weather in Santa Barbara was wonderful (the fires had not started yet) and the ladies attending were delightful. It is very gratifying for me to spend a weekend with women who love to stitch!

We spent 2 days working on our embroidery project and playing and learning new techniques. As many of you know, I am a die hard floche fan (as is Julia). It is wonderful for smocking and embroidery. When we were in Madeira, all of the embroideresses used floche. It has a nice sheen, it fluffs when you wash it, and is wonderful for bullions! We played around with blending the floche colors. Floche is a cotton embroidery thread, a bit thicker than a strand of floss. One strand of floche is the equivalent of 1 ½ strands of floss. With floche, 1 strand is 1 strand – you do not have to strip it like you do with floss. Floche is a 5 ply, soft twist thread. A ply is essentially a thin piece of the fiber that is put together with other plies to form the thread. For floche, 5 of them are put together and twisted softly.

Sometimes, when I have needed a smaller French knot or finer bullion, I would separate and remove one of the strands. If you do this, keep in mind that it does weaken the thread, so you need to use shorter lengths when stitching.

To blend the floche:

-Take 2 different colors of floche.

-Remove 2 plies from one strand, 3 from the other.

-Put 2 plies from one color with 3 of the other, and vice versa. Softly twist them and then stitch! The colors give great shading and dimensional effects!

I carry DMC floche in the hank (150 yds) and it comes in 87 different colors. The floche colors match the floss colors (for example, 666 red floche is the same color as 666 floss). If you would like a color chart for the colors that floche is available, just send me an email and I'll send you one.

Please note that my **Floche of the Month Club** price will be going up in August (from \$35 / month to \$37.50 / month). With the euro going up as fast as it is, all my items that are imports have had increases, not necessarily on the items themselves, but increases due to the exchange rate. Floche of the Month Club is designed to give you a shipment a month for 12 months, and at the end of that time, you will have a complete set of floche, needles, and some other little surprises. Anyone who starts the club **before** the price increase will continue at the lower price for the completion of the club.

Finally, a **construction tip for piping on sleeves!** When you attach piping to a sleeve cuff, do NOT attach to the flat cuff and then seam the cuff! This will give you a big bulky hump at the seam line! Instead, do the following:

Cut a piece of piping the length of the cuff and then Press the seam allowance up on one edge of the cuff

Sew the two sides of the cuff together at the seam line (cuff is now a circle)

Take the piece of piping and pull out the cording at each end about ½ inch and clip. Pull the piping so the cording pops back inside.

About 3/8 inch before the seam, start pinning the piping to the cuff **BELOW** the seam line so that the piping is in the seam allowance.

Curve the piping to the seam so that it hits the seam line at the stitched center seam on the cuff.

Keep the piping on the seam line all the way around the cuff until you meet the center seam again. Curve the end if the last 3/8" of piping down into the seam allowance.

The piping should cross over and meet at the cuff center seam. Because the ends of the piping cross over each other and go down into the seam allowance instead of butting into each other, you have eliminated the bulk and the piping is nice and flat. Then you are ready to Attach the sleeve to the piped cuff.

Hope this has been helpful. Enjoy your summer and I'll send out another newsletter in Aug with SAGA convention specials!

Vaune

vaune@vaune.com www.vaune.com