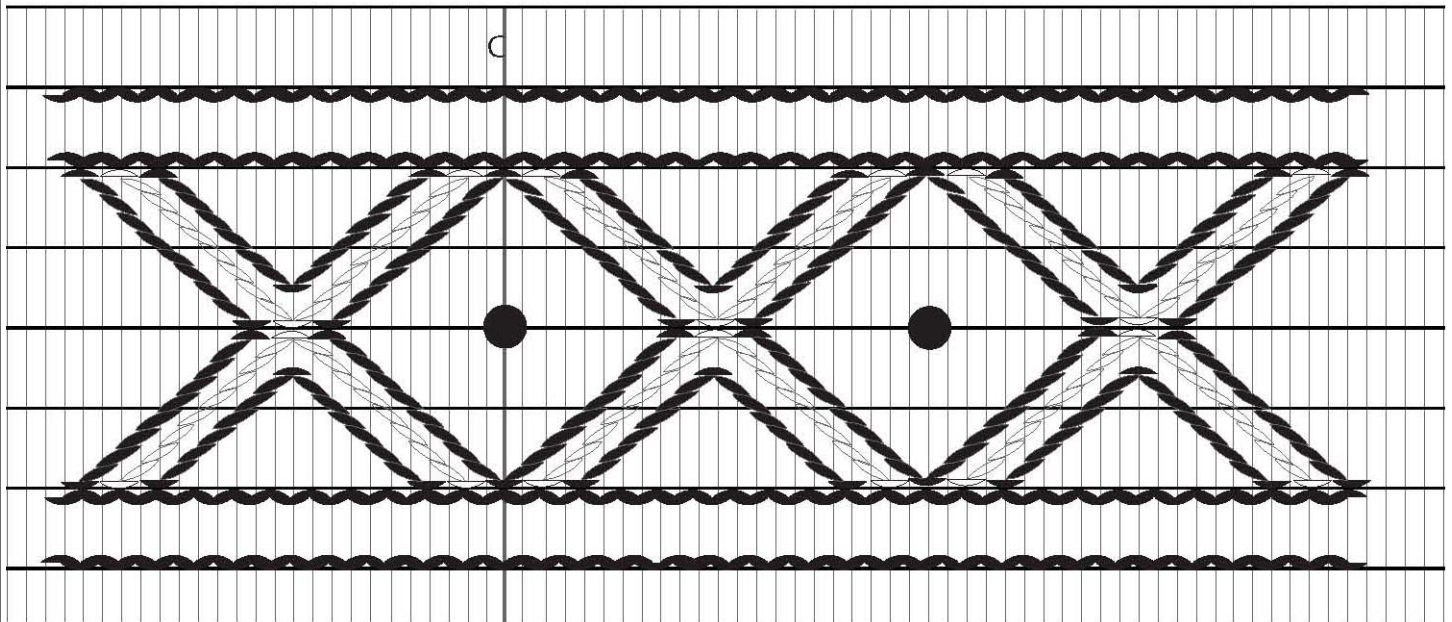

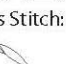


Contrasting Color

© 2012 Vaune Pierce



Symbols:
Basic Cable
Stitch: 
Trellis Stitch: 

Row 1: (Black) Start with an up cable on the center 2 pleats, and cable to the end of the row. Turn fabric and cable to the beginning of the row.

Row 2: (Black) Stitch a mirror image of Row 1.

Row 2 to Row 4: (Middle White V). Move 2 pleats to the right of center on Row 2. Stitch an up cable on the 2nd and 3rd pleat from center. Stitch an 8 step, 2 space trellis from Row 2 to Row 4. Stitch a down cable on Row 4. Stitch an 8 step, 2 space trellis from Row 4 to Row 2. Stitch an up cable and take the thread to the back. Skip 2 pleats and repeat. At the end of the row, turn fabric and stitch to the other end.

Row 6 to Row 4: (Middle White inverted V). This row is a mirror image of the row above.

Row 2 to Row 3 1/2: (Inside Black V). Move 4 pleats to the right of the center 2 pleats on Row 2. Stitch a 6 step, 1 1/2 space trellis from Row 2 to Row 3 1/2. Stitch a down cable. Stitch a 6 step, 1 1/2 space trellis from Row 3 1/2 to Row 2. Stitch an up cable and take the thread to the back. Skip 6 pleats and repeat.

Row 6 to Row 4 1/2: (Inside Black inverted V). This Row is a mirror image of the row above.

Row 2 to Row 4: (Inside Black inverted V) Start with an up cable on the Center 2 pleats on Row 2. Stitch an eight step, 2 space trellis down to Row 4. Stitch a down cable and take the thread to the back. Turn fabric around bring the needle out of the fabric in the valley between the cable at the center 2 pleats on Row 2. Stitch an 8 step, 2 space trellis in the opposite direction, from Row 2 to Row 4. When you repeat this stitch sequence, you will start with a down cable at Row 4, on the 2 pleats next to the White Down cable. Stitch an 8 step, 2 Row trellis from Row 4 to Row 2. Up cable. Stitch an 8 step, 2 Row trellis from Row 2 to Row 4. Down cable and take the thread to the back. Skip 2 pleats and repeat. At the end of the row, turn the fabric and stitch to the other end.

Row 6 to Row 4: (Inside Black V) This row is a mirror image of the row above.

Row 6: (Black) This row of cables is identical to Row 1.

Row 7: (Black) This row of cables is identical to Row 2.

Embroidered Buttons are stitched on Row 4 of the center 2 pleats of each diamond.