



Vaune's January Newsletter

www.vaune.com vaune@vaune.com
805-529-5005

Happy New Year,
and here is to
more sewing in 2016!

Our holiday was wonderful, although I could have used an extra week! Our Christmas tree and decorations are (almost) all put away and I am setting down a schedule for my sewing life. It seems as if I don't schedule it, it does not happen. I have lots of projects in the works, but will fill you in more on these next time!

One of the things I have been playing around with is a new fabric that I just got in. It has a couple of sizes of polka dots and I have been using the dots to pleat the fabric. My quick newsletter lesson is on using your fabric as a guide for your pleats (I will have a more in depth 'tute' on my blog in the next week.

www.vaunesewingroom.blogspot.com

If you visit, don't forget to follow by email! You will get an email whenever I have a new post. One of my New Year's Resolutions is to post more often. I am already doing better on newsletters - 2 months in a row!

I will be heading to Puyallup in February for the Sewing and Stitching Expo. If you ever have the chance to go, TAKE IT! It has all types of sewing and many things to see and do - a wonderful learning opportunity for all sewists (and of course, don't forget the shopping)! This newsletter is short, but sweet - enjoy...

Happy Stitching,
Vaune

Where I'll Be.....

February 25- 28, 2015

Puyallup, WA

Sewing and Stitchery Expo

April 11, 2015

Sew Cal Gals

Arcadia, CA

Things I have learned.....

Sometimes the only thing that I learn from a class is that it is not for me!

When I am taking a class, if I learn one thing that I will consistently use, then my money was well spent!

*It is okay to **Not** finish a project...wouldn't want to ruin the Bell Curve!!!*

Library Shelf



Issue #88

arrived a few weeks ago and contains several beautiful projects, as usual. The reindeer is stunning as is the stumpwork flowers. If only there were more hours in a day!!! \$23



Issue #87

sold out at the US Distributors - I have one left. I especially like the sewing holder! \$23



Fabric Makes Me Happy!



Polka Dots are in right now and these 2 double dot fabrics caught my eye. What really made my imagination whir was how I could pleat this! If you look at the picture on the left, you can see how I picked up the dots (by hand) to create a pattern in the pleats. I can use the fabric as a guide to my smocking! See the next page for some guidelines!

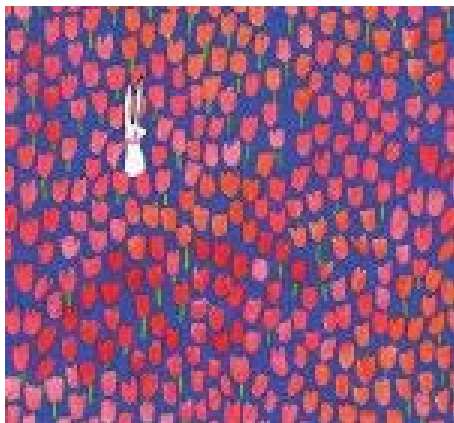
Double Dot Fabric! This fabric is 100% cotton and 45" wide. It is perfect for dresses, skirts, bubbles, collars, and trims. **\$12/yd., while it lasts.**



Basic Dot Fabric

The dots on this fabric are a bit bigger than the Double Dot fabric. A nice 100% cotton, 45" wide

\$12/yd.



Hidden Bunny Fabric

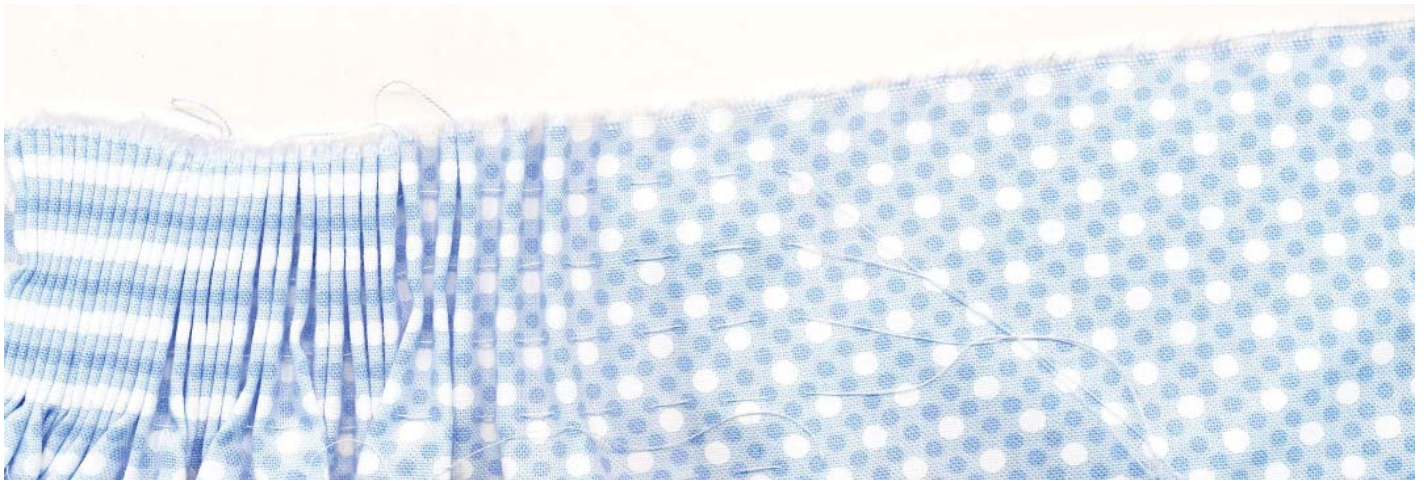
I could not order this fast enough when I saw this at the textile show. It has a rabbit hidden among the tulips - would make such a cute dress for Spring or Easter! One thought is to make a simple A-line dress with

pockets and place the rabbit so that it is popping out of the pocket. I can also see this as a yoke dress, a jumper or a sleeveless yoke dress for the summer! ** Please note that this is supposed to arrive between January 15-30. If you order any of the other fabric, then I will ship this separately when it comes in, unless you tell me to wait.

100% cotton, 45" wide **\$12/yd**

Channeling your Fabric

One of the great things about smocking is that you can go beyond the basic pleats. Running your fabric through a pleater is time-saving and can be the start of some gorgeous garments, but you can look to your fabric to create pleats and smocking that are based on your fabric. A great example of this is the Double Dot fabric. In this fabric, there are 2 different dots - a small blue dot and a larger (about 1/8") white dot. The dots are in rows, with a solid row of small dots and then a row of alternating white and blue dots. I ran a thread through the small dots on the alternating row. When I pulled up the threads, you can see the fabric looks completely different! I have a row of light blue (background color) a row of white, light blue, darker blue, and these keep repeating. When I start smocking, I can stitch my design, using the colored rows as my guides instead of the pleating threads.



Some thing to be aware of (and compensate for)!

Is your design printed on-grain? Can you work with it? In this case, the printing is off grain, but not by much. You can see in the picture along the top of the fabric that the fabric above the white dots gets wider as you move to the right. Over the width of this particular fabric, it gets wider and narrower, but the most it is off is about 1/8"

For me, that is livable. If it were 3 inches of, I would not take a chance! Before I pleated my skirt front, I tore my fabric (allowing for an extra inch or 2) to find the grain. Then I cut the fabric with scissors, following the dots, so that I would visually have a straight skirt front on the top. I repeated the procedure on the bottom, so that I would have a visually even bottom, allowing for an even hem.

I will go into this in more depth on my blog, www.vaunessewingroom.blogspot.com and it will be posted by January 18.

I wish you all a wonderful 2016, with lots of stitchin' time!

Happy Stitching,

Vaune